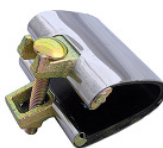
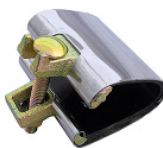


WASCO

TOOLS & MISCELLANEOUS

Lasco # Blish Mize SKU	Description
11-1035 5968318	1/2" x 260" White Teflon Tape For Metal Pipe Threads. Federal Military Spec T-27730A. Carded. 052151110077
11-1037 5965793	1/2" x 520" White Teflon Tape For Metal Pipe Threads. Federal Military Spec T-27730A. Carded. 052151110060
13-1065 5964481	LASCO Reseater / Grinder, Seat Dresser, 3 Cutters, Guide Cone, 6 Washers & 2 Screws. Carded. 052151101006
13-1300 5968417	Stainless Steel, One Piece Clamp, Single Bolt, 3" Long, Pipe Repair Clamp, Fits 1/2" Iron Pipe Size Or 3/4" L Copper. Open Clamp, Place Clamp Over Leaking Area, Tighten Bolt. Bulk. 052151224415
13-1302 5968425	Stainless Steel, One Piece Clamp, Single Bolt, 3" Long, Pipe Repair Clamp, Fits 3/4" Iron Pipe Size Or 1" L Copper. Open Clamp, Place Clamp Over Leaking Area, Tighten Bolt. Bulk. 052151101228
13-1304 5968433	Stainless Steel, One Piece Clamp, Single Bolt, 3" Long, Pipe Repair Clamp, Fits 1" Iron Pipe Size Or 1-1/4" L Copper. Open Clamp, Place Clamp Over Leaking Area, Tighten Bolt. Bulk. 052151101235
13-1306 5968441	Stainless Steel, One Piece Clamp, Single Bolt, 3" Long, Pipe Repair Clamp, Fits 1-1/4" Iron Pipe Size Or 1-1/2" L Copper. Open Clamp, Place Clamp Over Leaking Area, Tighten Bolt. Bulk. 052151101242
13-1308 5968458	Stainless Steel, One Piece Clamp, Single Bolt, 3" Long, Pipe Repair Clamp, Fits 1-1/2" Iron Pipe Size Or 1-1/2" L Copper. Open Clamp, Place Clamp Over Leaking Area, Tighten Bolt. Bulk. 052151101259
13-1310 5968466	Stainless Steel, One Piece Clamp, Single Bolt, 3" Long, Pipe Repair Clamp, Fits 2" Iron Pipe Size Or 2" L Copper. Open Clamp, Place Clamp Over Leaking Area, Tighten Bolt. Bulk. 052151101266

Picture



Lasco # Blish Mize SKU	Description
13-1601 5965801	3/4" x 10 Foot, 28 Gauge, Light Duty, Galvanized, Perforated Plumbers Tape. Carded. 052151102300
13-1901 5964499	0 To 300 PSI, Water Test Gauge With Adapter To 3/4" Female Hose Thread, 2-1/2" Face, Used To Test Water Pressure. Carded. 052151130044
13-1903 5965819	0 To 30 PSI, Gas Test Gauge With Block Adapter To 3/4" Female Pipe Thread & Air Valve Fitting, 2-1/2" Face, Used To Test Air/Gas Pressure. Carded. 052151130198
13-2023 5964515	11", Spring Loaded Basin Wrench, Jaw Removes Faucet Nuts. Carded. 052151130051
13-2027 5964523	16", Spring Loaded Basin Wrench, Jaw Removes Faucet Nuts. Carded. 052151103284
13-2067 5964531	Hinged Jaw Lock Nut Wrench For The Removal Of Sink Basket, Spud Nuts, & Toilet Flush Valves. Carded. 052151130204
13-2103 5964549	Tapered, Angle Seat Wrench Used For The Removal Of Faucet & Ballcock Seats. Carded. 052151103451
13-2105 5964556	Six Stepped, Angled Seat Wrench Used For The Removal Of Faucet & Ballcock Seats Carded 052151103475
13-2119 5964564	Drain Shoe Strainer Wrench Tool, Removes Bath Tub & Sink Strainers, Tapered To Fit All Sizes. Carded. 052151314116

Picture



Lasco # Blish Mize SKU	Description
13-2199 5964572	Adjustable Lock Nut Strainer Wrench, Can Be Used On Nuts Fron 1" To 3". Carded. <i>052151103611</i>
13-2205 5964580	P.O. Plug Wrench, Can Be Used In The Removal Of Lavatory P.O. Plug & Bath Tub Strainers. Carded. <i>052151130150</i>
13-2303 5964598	Internal Nipple Extractor Used On 1/2" Cam Style Brass & Galvanized Pipe Nipples. Carded. <i>052151103703</i>
13-2305 5964606	Internal Nipple Extractor Used On 3/4" Cam Style Brass & Galvanized Pipe Nipples. Carded. <i>052151130167</i>
13-2317 5964614	Socket Wrench Set With Handle, Four Shower Valve Sockets One Handle, For The Removal Of Shower Faucet Stems, 10 Sizes, 5 Piece. Carded. <i>052151130068</i>
13-2603 5964648	Strap Wrench, 2" Capacity, 7" Long, Used For Chrome Nipple Removal. Carded. <i>052151130174</i>
13-2701 5964655	Standard Faucet Handle Puller, Light Duty. Carded. <i>052151104052</i>
13-2733 5964663	Mini Hacksaw With Blade, Cuts Wood, Plaster, Steel Brass &, Plastic. Carded. <i>052151248961</i>
13-2739 5965827	24" Long Cable Saw with Handle Grips, Used To Cut PVC Pipe. Carded. <i>052151124999</i>

Picture



Lasco # Blish Mize SKU	Description
13-2807 5964671	Flaring Tool For 3/16" Thru 5/8" Copper & Aluminum. Carded. <i>052151130075</i>
13-2921 5964689	Tubing Cutter For Copper & Aluminum Tubing, 1/8" To 1-1/8" Capacity. Carded. <i>052151104359</i>
13-2951 5964697	Mini Tubing Cutter For Copper & Aluminum Tubing 1/8" To 5/8" Capacity. Carded. <i>052151130013</i>
13-2953 5964705	Deluxe Mini Tubing Cutter For Copper & Aluminum Tubing, 1/8" To 7/8" Capacity. Carded. <i>052151236203</i>
13-2981 5964713	PVC Pipe Ratchet Cutter For 1/2" To 1" PVC Pipe, With Replaceable Blade. Carded. <i>052151104434</i>
13-3203 5964721	Inside, Cleaning Brush For 1/2" Copper Tubing. Carded. <i>052151104717</i>
13-3205 5964739	Inside, Cleaning Brush For 3/4" Copper Tubing. Carded. <i>052151104731</i>
13-3231 5965835	4 In 1 Copper Cleaning Tool, For Inside / Outside, 1/2" & 3/4" Copper Pipe. Carded. <i>052151291134</i>
13-3243 5965843	1-1/2" x 72" Roll, 180 Grit, Sand Cloth, Used For EZ Cleaning Copper Pipe When You Solder. Carded. <i>052151130020</i>

Picture



Lasco # Blish Mize SKU	Description
13-3247 5965850	2 Small #1 Acid Brushes Used For Spreading Flux On Copper Pipe When You Solder. Carded. <i>052151104885</i>
17-0951 5968276	Poly Tubing Ice Maker Installation Kit, 1/4" x 25 Foot OD Milky Tubing, Brass Self Tapping, 1/4" Compression Outlet Saddle Valve That Fits 3/8" OD To 1-3/8" OD Copper Tubing & Misc. Fittings. Carded. <i>052151170071</i>
17-0953 5968284	Copper Tubing Ice Maker Installation Kit, 1/4" x 20 Foot OD Copper Tubing, Brass Self Tapping, 1/4" Compression Outlet Saddle Valve That Fits 3/8" OD To 1-3/8" OD Copper Tubing & Misc. Fittings. Carded. <i>052151171702</i>
33-3404 5968854	3" PVC Sewer Relief Plug. Carded. <i>052151313225</i>
33-3406 5960000	4" PVC Sewer Relief Plug. Carded. <i>052151313232</i>



Lasco # Blish Mize SKU	Description

Picture

